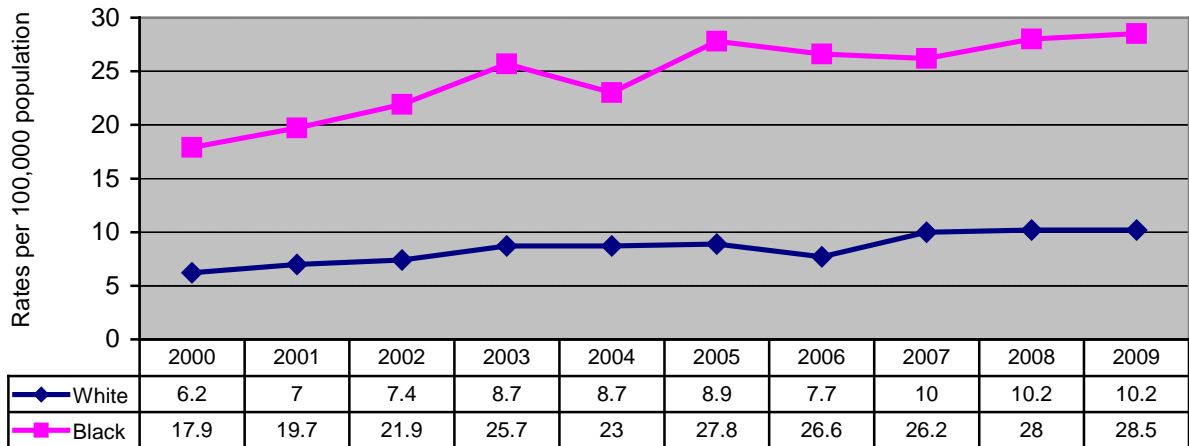
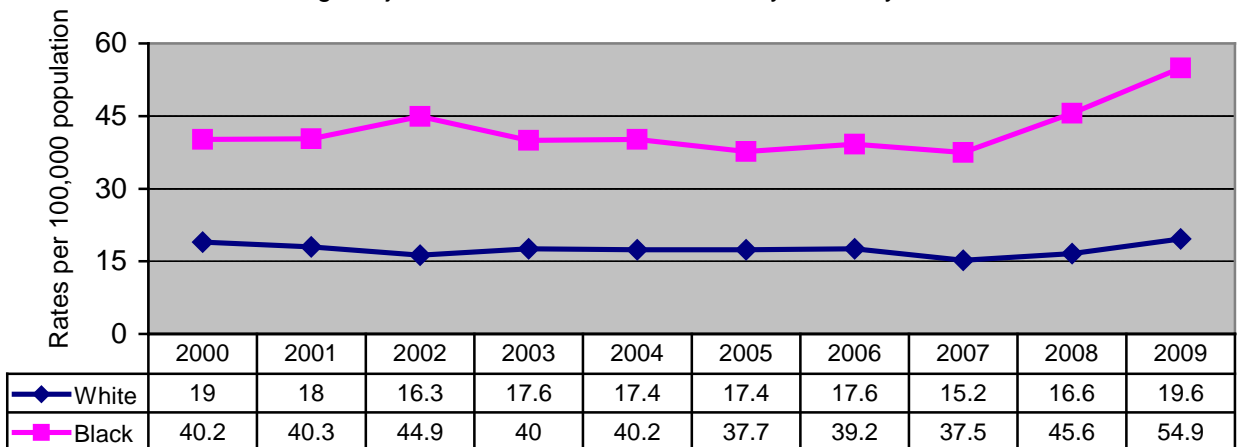


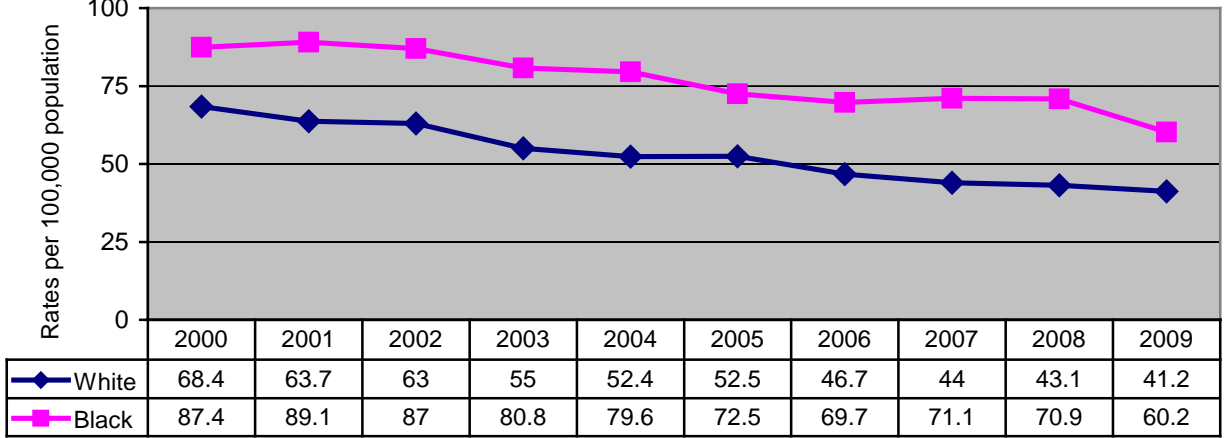
MS age-adjusted Hypertension Mortality Rates by Race, 2000 - 2009



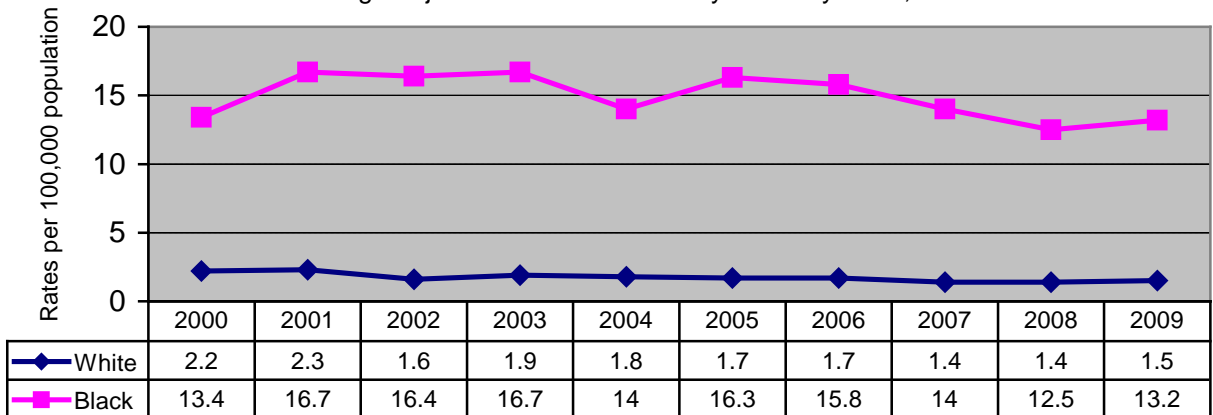
MS age-adjusted Diabetes Mellitus Mortality Rates by Race, 2000 - 2009



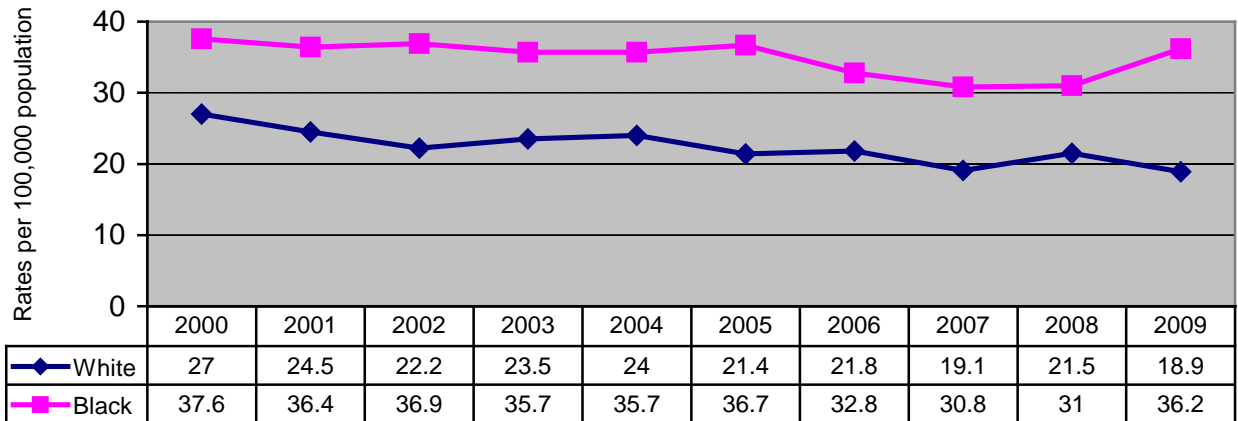
MS age-adjusted Cerebrovascular Disease (Stroke) Mortality Rates by Race 2000 - 2009



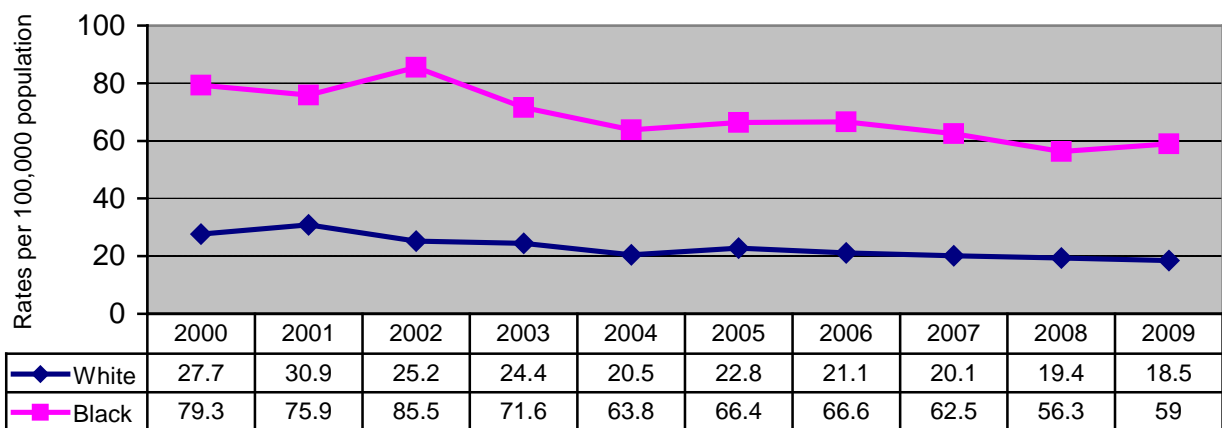
MS age-adjusted HIV/AIDS Mortality Rates by Race, 2000 - 2009



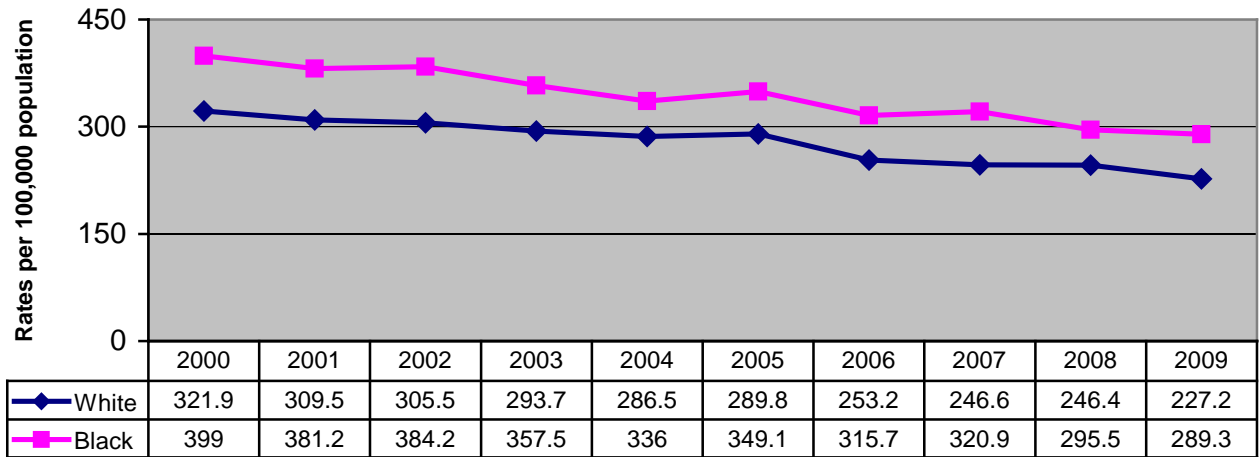
MS age-adjusted Female Breast Cancer Mortality Rates by Race, 2000 - 2009



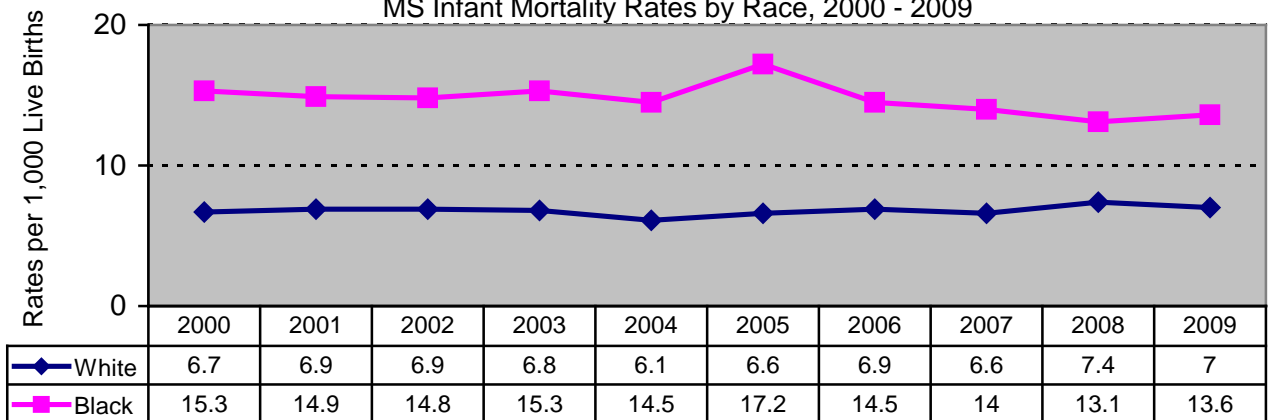
MS age-adjusted Prostate Cancer Mortality Rates by Race, 2000 - 2009



MS age-adjusted Heart Disease Mortality Rates by Race, 2000-2009



MS Infant Mortality Rates by Race, 2000 - 2009



Data source: The Mississippi Statistically Automated Health Resource System (MSTAHRS): <http://mstahrs.msdh.ms.gov/>

Other racial groups/ethnicities are not included because events are small and unreliable
 MS- Mississippi