

2003 YOUTH RISK BEHAVIOR SURVEY RESULTS

Mississippi Middle School Survey Survey Summary

The Youth Risk Behavior Survey (YRBS-M) was completed by 1510 students in 34 public middle schools in Mississippi during the spring of 2003. The school response rate was 76%, the student response rate was 86%, and the overall response rate was 65%. The results are representative of all students in grades 6-8. The weighted demographic characteristics of the sample are as follows:

Females	49.4%	6th grade	33.5%	African American	50.1%
Males	50.6%	7th grade	34.5%	Hispanic/ Latino	0.4%
		8th grade	31.6%	White	48.1%
				All other races	0.9%
				Multiple races	0.6%

Students completed a self-administered, anonymous, 49-item questionnaire. Survey procedures were designed to protect the privacy of students by allowing for anonymous and voluntary participation. Local parental permission procedures were followed before survey administration.

The YRBS is one component of the Youth Risk Behavior Surveillance System developed by the Centers for Disease Control and Prevention in collaboration with representatives from 71 state and local departments of education and health, 19 other federal agencies, and national education and health organizations. The Youth Risk Behavior Surveillance System was designed to focus the nation on behaviors among youth related to the leading causes of mortality and morbidity among both youth and adults and to assess how these risk behaviors change over time. The Youth Risk Behavior Surveillance System measures behaviors that fall into six categories:

1. Behaviors that result in unintentional injuries and violence;
2. Tobacco use;
3. Alcohol and other drug use;
4. Sexual behaviors that result in HIV infection, other sexually transmitted diseases, and unintended pregnancies;
5. Dietary behaviors; and
6. Physical activity.

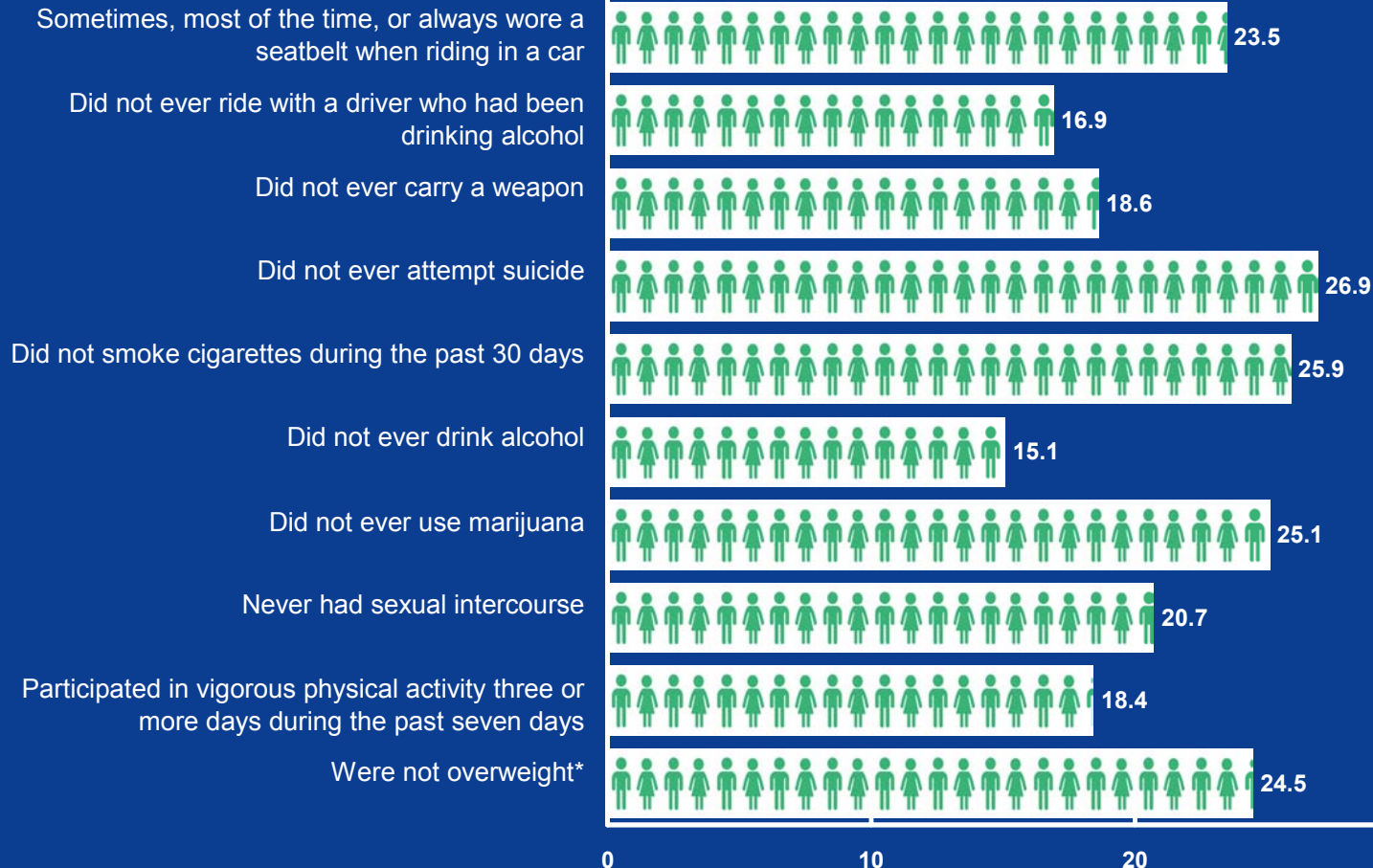
More information about the Youth Risk Behavior Surveillance System can be obtained from <http://www.cdc.gov/yrbss>.



Mississippi Middle School Survey

Summary Graphs

Number of students in a class of 30 who:



Weighted Data

*See the corresponding summary table for detailed explanation of data.



Mississippi Middle School Survey

Summary Graphs

Number of students in a class of 30 who:

Rarely or never wore a seatbelt when riding in a car



6.5

Ever rode with a driver who had been drinking alcohol



13.1

Ever carried a weapon



11.4

Ever attempted suicide



3.1

Smoked cigarettes during the past 30 days



4.1

Ever drank alcohol



14.9

Ever used marijuana



4.9

Ever had sexual intercourse



9.3

Did not participate in vigorous physical activity three or more days during the past seven days



11.6

Were overweight*



5.6

0 10 20 30

Weighted Data

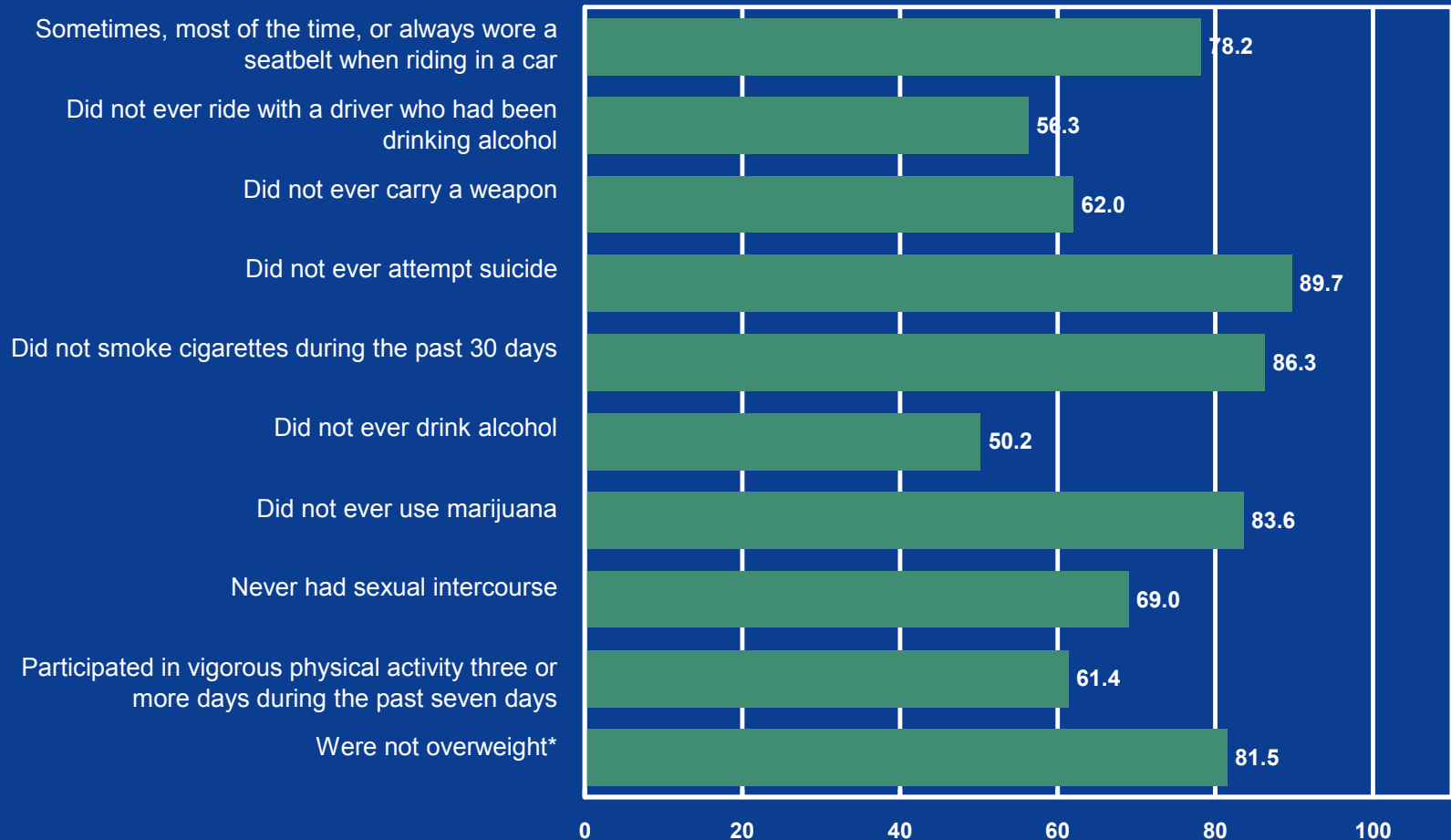
*See the corresponding summary table for detailed explanation of data.



Mississippi Middle School Survey

Summary Graphs

Percentage of students who:



Weighted Data

*See the corresponding summary table for detailed explanation of data.



Mississippi Middle School Survey

Summary Graphs

Percentage of students who:

Rarely or never wore a seatbelt when riding in a car



Ever rode with a driver who had been drinking alcohol



Ever carried a weapon



Ever attempted suicide



Smoked cigarettes during the past 30 days



Ever drank alcohol



Ever used marijuana



Ever had sexual intercourse



Did not participate in vigorous physical activity three or more days during the past seven days



Were overweight*



0 20 40 60 80 100

Weighted Data

*See the corresponding summary table for detailed explanation of data.